

**Barnstable County Fire Rescue Training Academy
Structural Fire Burn Scenarios – Local/Outside Fire Departments**

SCENARIO # 1 - One Room Fire (Below Grade)

SCENARIO # 1	FIRE LOCATION	FUEL LOAD	FUEL TYPE	TEACHING OBJECTIVES Train Students to:	NOTES
<i>One Room Fire – Below Grade</i>	DIVISION ONE Room 102 Simulated Below Grade – Advancement from 2 nd floor down to first via interior stairwell #2	Three quarters (3/4) - 1 bale	Straw/Hay (untreated)	<ul style="list-style-type: none"> • properly extinguish a fire using the combination attack for fires at all grades • make proper handline selection • utilize proper hose handling techniques in the building <u>while descending to fire location</u> • utilize and understand the need for proper communication between team members and the Incident Commander • understand and perform the responsibilities for each of the positions on the attack lines (nozzle, vent, and overhaul) • understand <u>challenges of attacking below grade fires</u> • understand <u>challenges of ventilation in below grade fires</u> 	Simulate Cellar/Basement fire with attack from <u>directly</u> above the fire (<i>with emergency exits without descending/ascending to outside from fire floor</i>)

Barnstable County Fire Rescue Training Academy

Structural Fire Burn Scenarios – Local/Outside Fire Departments

Scenario # 1 – One Room Fire (Below Grade)

Instructor Notes:

- Proper entry when entering lower level
- Proper line advancement
- Spreading out on line
- All firefighters on same side of line
- Forcible entry for a bulkhead
- Check doors for heat (as applicable)
- Controlling doors/securing bulkheads
- Proper vent & overhaul
- Communications between firefighters attacking fire
- Communications with Incident Commander on progress and conditions

Fire Location:

- Attack line must be run **up** Stairwell S-1 to attack from above the fire
- Fire Attack Location **from** Room 202 NB **down** Stairwell S-2
- **Fire location - Room 102**

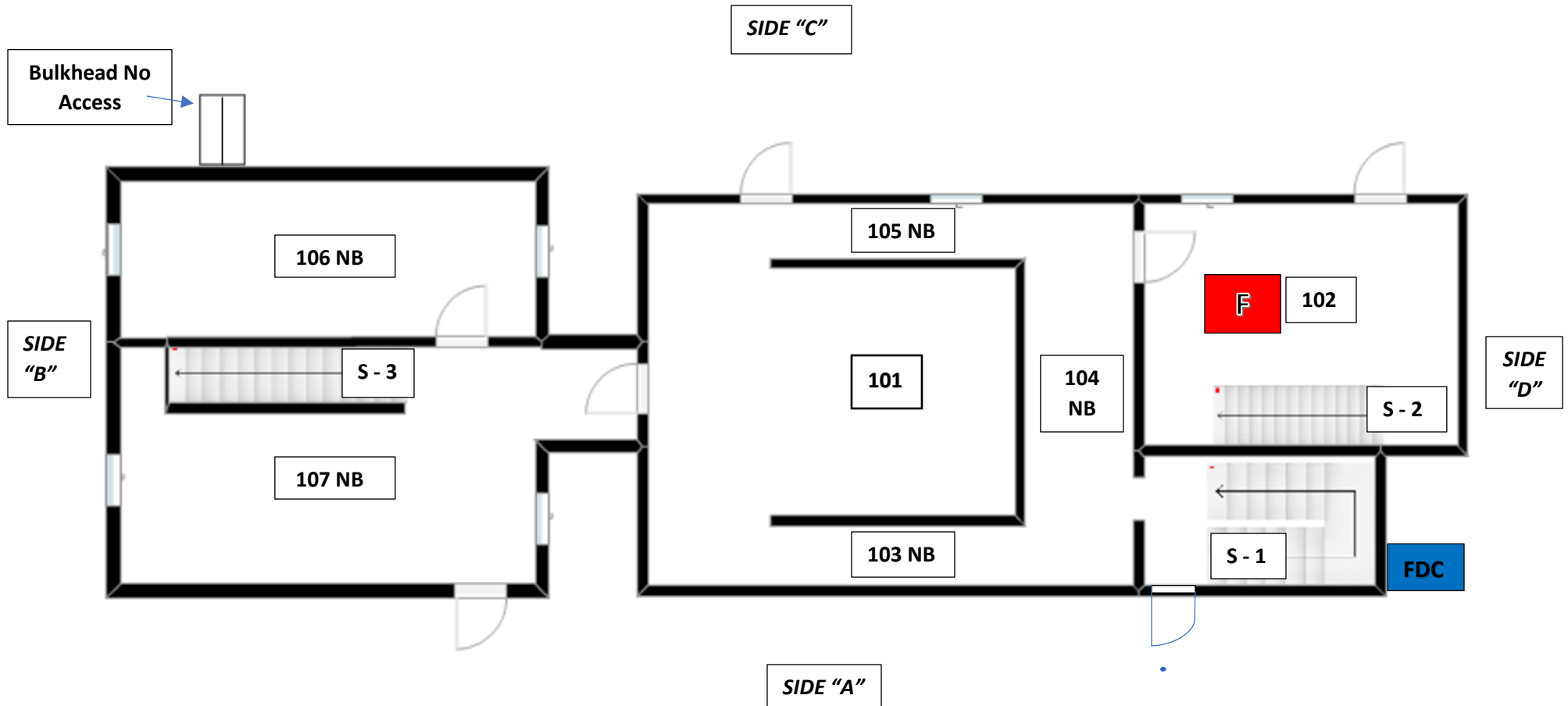
Emergency Exit/Entrance:

- Two emergency exits/entrances to fire location – (1) **Door from** Room 104 NB and (2) **exterior door into** Room 102

Barnstable County Fire Rescue Training Academy
Structural Fire Burn Scenarios – Local/Outside Fire Departments

Scenario # 1 – One Room Fire (Below Grade)

DIVISION 1



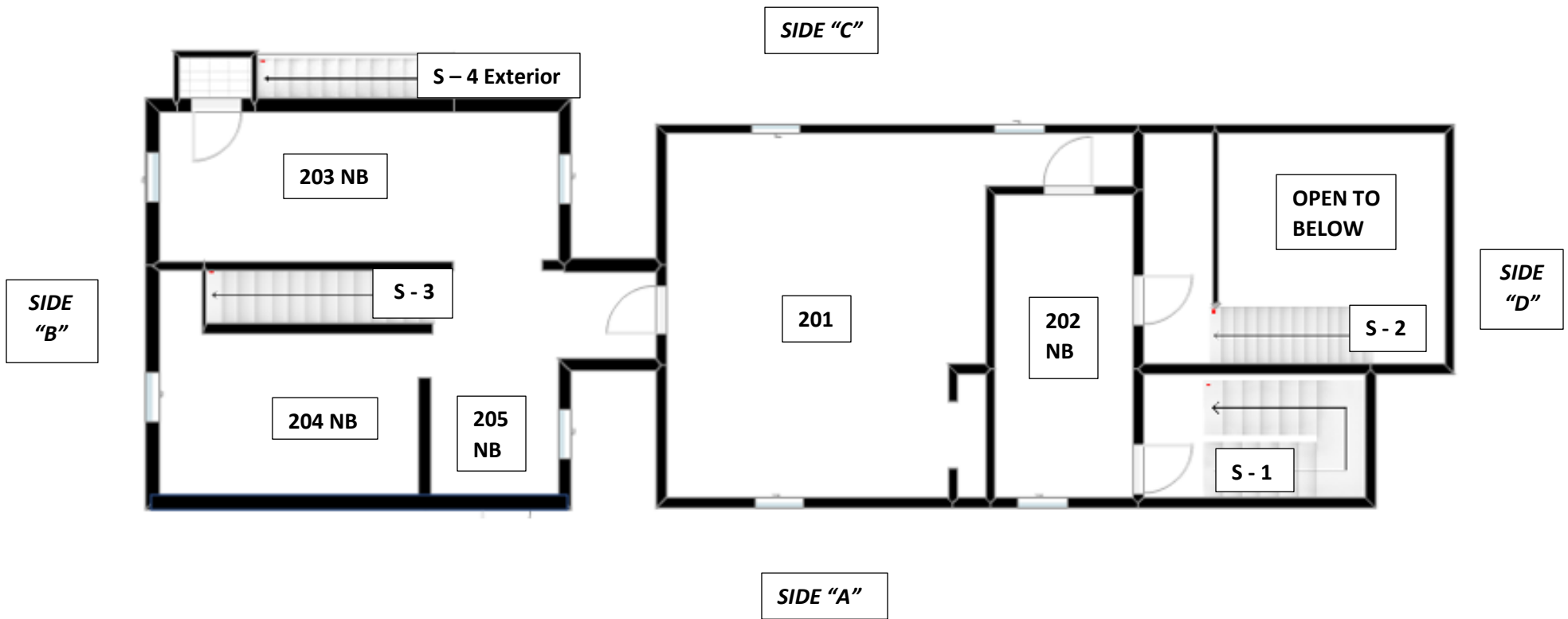
NB after Room Number = No Burns Allowed In That Space

No Burns in Stairwells

**Barnstable County Fire Rescue Training Academy
Structural Fire Burn Scenarios – Local/Outside Fire Departments**

Scenario # 1 – One Room Fire (Below Grade)

DIVISION 2



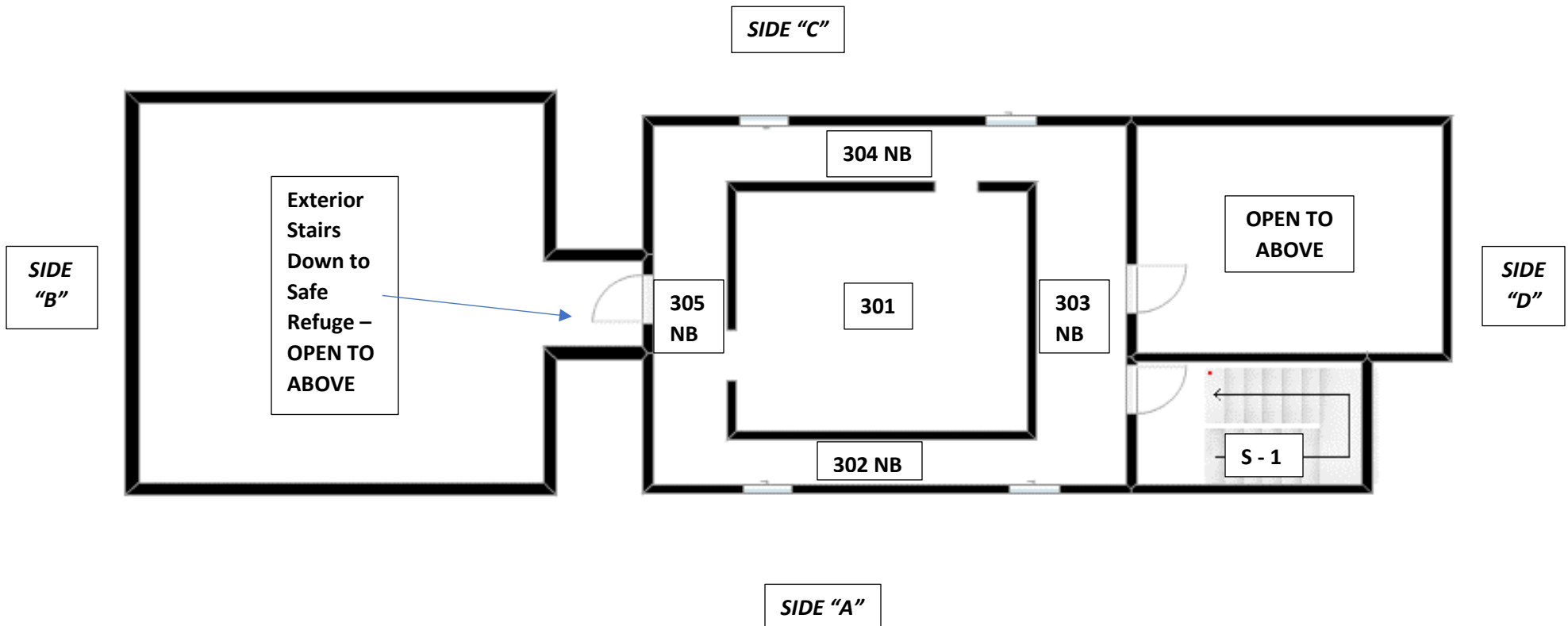
NB after Room Number = No Burns Allowed In That Space

No Burns in Stairwells

**Barnstable County Fire Rescue Training Academy
Structural Fire Burn Scenarios – Local/Outside Fire Departments**

Scenario # 1 – One Room Fire (Below Grade)

DIVISION 3



NB after Room Number = No Burns Allowed In That Space

No Burns in Stairwells

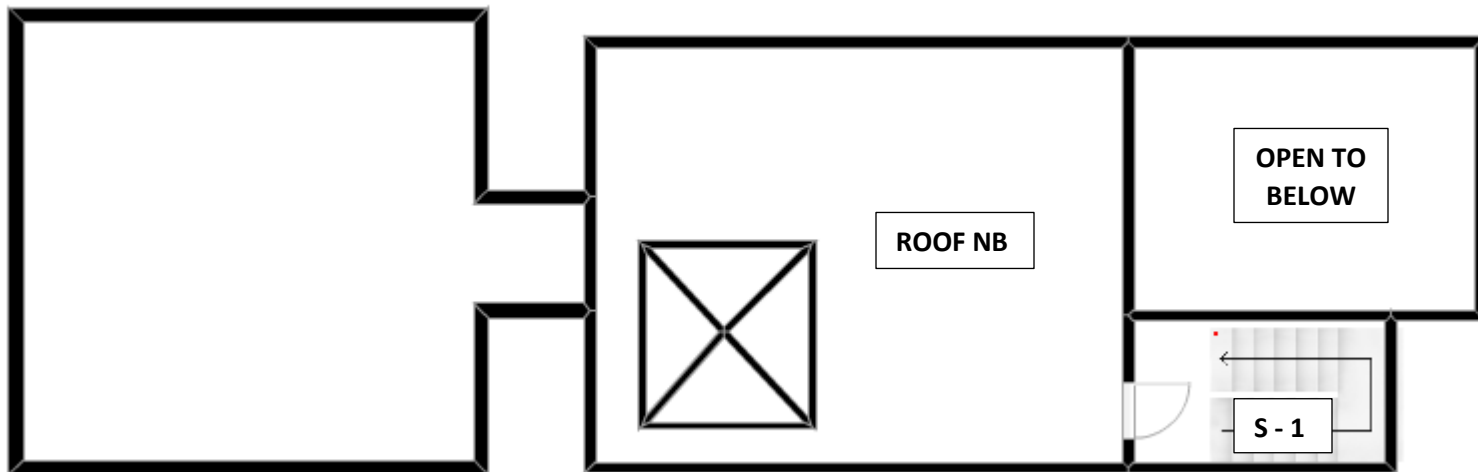
**Barnstable County Fire Rescue Training Academy
Structural Fire Burn Scenarios – Local/Outside Fire Departments**

Scenario # 1 – One Room Fire (Below Grade)

ROOF

SIDE "C"

*SIDE
"B"*



*SIDE
"D"*

SIDE "A"

NB after Room Number = No Burns Allowed In That Space

No Burns in Stairwells

Barnstable County Fire Rescue Training Academy
Structural Fire Burn Scenarios – Local/Outside Fire Departments

Symbols



Fire Location



Fire Department Connection



Artificial Smoke Generated into Space