

**Barnstable County Fire Rescue Training Academy  
Structural Fire Burn Scenarios – Local/Outside Fire Departments**

***SCENARIO # 3 - Two Room Fire – Below Grade***

SCENARIO # 3	FIRE LOCATION	FUEL LOAD	FUEL TYPE	TEACHING OBJECTIVES Train Students to:	NOTES
<b><i>Two Room Fire – Below Grade</i></b>	<p><b>DIVISION ONE Rooms 102 and 101</b></p> <p>Simulated Below Grade – Advancement from 2<sup>nd</sup> floor down to first via interior <b>stairwell #2</b></p>	<p>Three quarters (3/4)- One (1) bale <u>per fire location</u></p>	<p>Straw/Hay (untreated)</p>	<ul style="list-style-type: none"> <li>• properly extinguish a fire using the combination attack for fires at all grades</li> <li>• make proper hand line selection</li> <li>• utilize proper hose handling techniques in the building <u>while descending to fire location and through the basement spaces</u></li> <li>• utilize and understand the need for proper communication between team members and the Incident Commander</li> <li>• understand and perform the responsibilities for each of the positions on the attack lines (nozzle, vent, and overhaul)</li> <li>• understand <u>challenges of attacking below grade fires</u></li> <li>• understand <u>challenges of ventilation in below grade fires</u></li> </ul>	<p>Simulate Cellar/Basement fire with attack from directly above the fire and fires in multiple locations within the basement <i>(with emergency exits without descending/ascending to outside from fire floor)</i></p>

## Barnstable County Fire Rescue Training Academy Structural Fire Burn Scenarios – Local/Outside Fire Departments

### ***SCENARIO # 3 - Two Room Fire – Below Grade***

#### Instructor Notes:

- Proper entry when entering lower level
- Proper line advancement
- Need for additional manpower on long stretches through multiple rooms
- Spreading out on line
- All firefighters on same side of line
- Multiple fires – control and complete extinguishment of each fire to progress to next fire
- Forcible entry for a bulkhead
- Check doors for heat (as applicable)
- Controlling doors/securing bulkheads
- Understanding that cellars/basements can have multiple rooms
- Proper vent & overhaul
- Communications between firefighters attacking fire
- Communications with Incident Commander on progress and conditions

#### Fire Location:

- Attack line must be run **up Stairwell S-1** to attack from above the fire
- Fire Attack Location **from Room 202 NB down Stairwell S-2** to fire in Room 102 **then through Room 102 and Hallways 104 NB and 105 NB OR through Hallways 104 NB and 103 NB to **second fire** in Room 101**
- **Fire locations - Room 102 and Room 101**

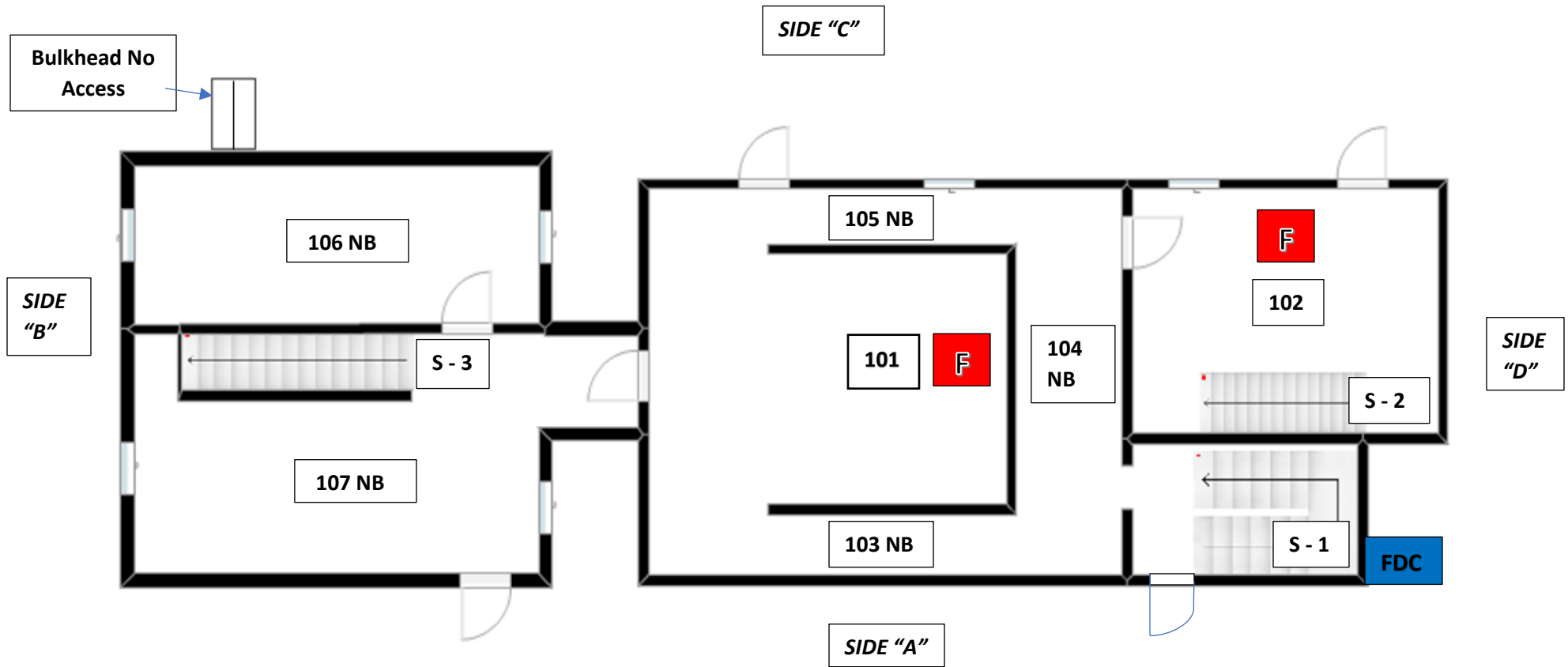
#### Emergency Exit/Entrance:

- Two emergency exits/entrances to fire location – (1 ) **Door from Room 105 NB (Side C)** and (2) **exterior door into Room 102 through to Hallway 104 NB**

Barnstable County Fire Rescue Training Academy  
Structural Fire Burn Scenarios – Local/Outside Fire Departments

SCENARIO # 3 - Two Room Fire – Below Grade

DIVISION 1



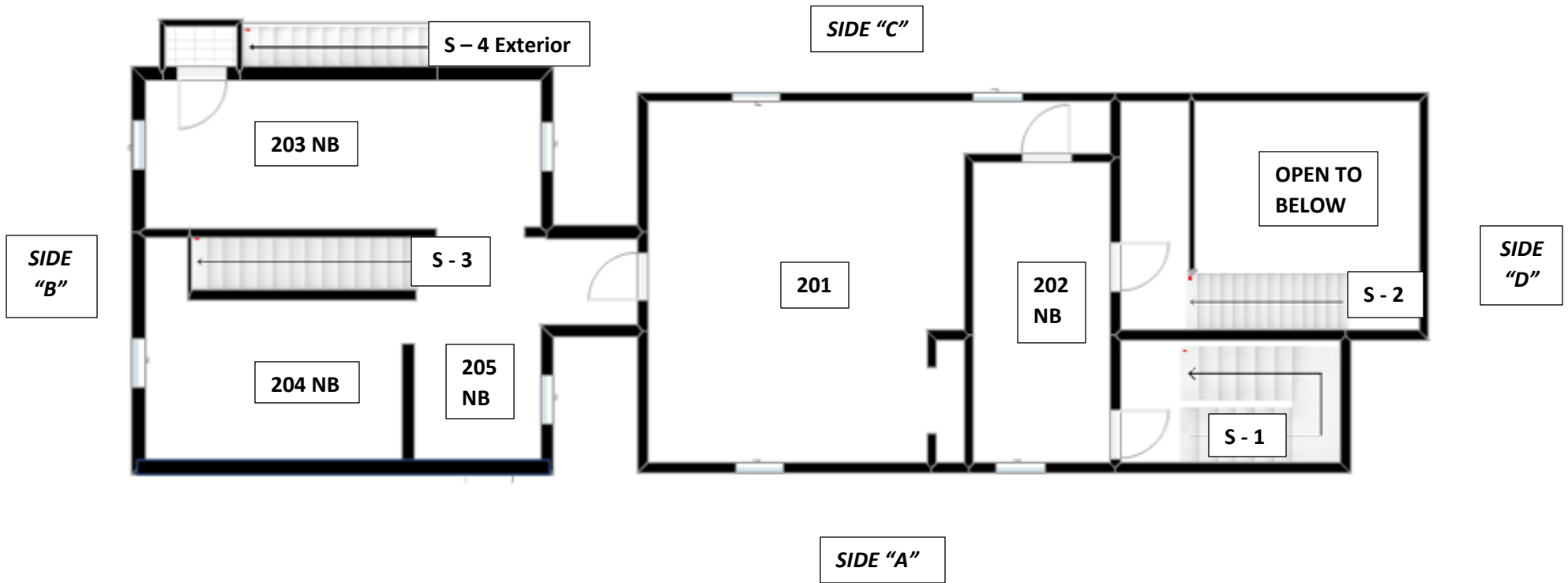
NB after Room Number = No Burns Allowed In That Space

No Burns in Stairwells

**Barnstable County Fire Rescue Training Academy  
Structural Fire Burn Scenarios – Local/Outside Fire Departments**

**SCENARIO # 3 - Two Room Fire – Below Grade**

**DIVISION 2**



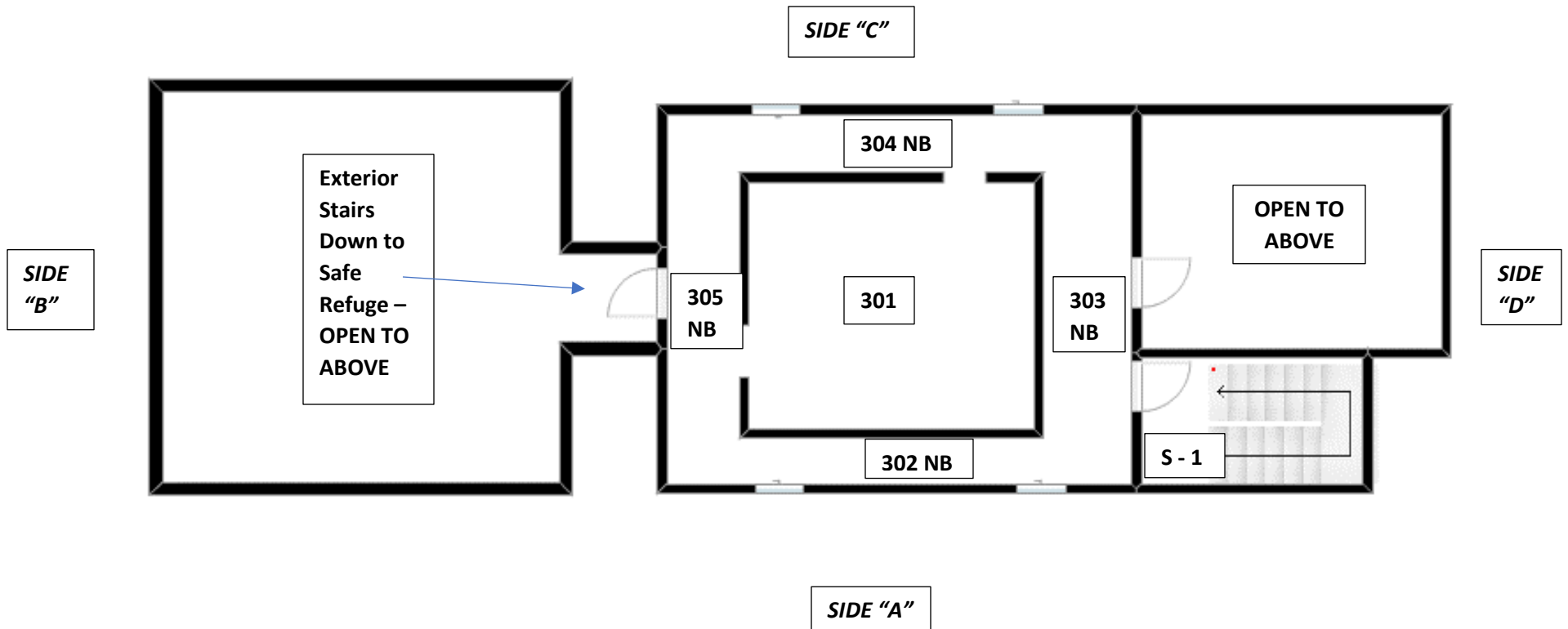
**NB after Room Number = No Burns Allowed In That Space**

**No Burns in Stairwells**

**Barnstable County Fire Rescue Training Academy  
Structural Fire Burn Scenarios – Local/Outside Fire Departments**

**SCENARIO # 3 - Two Room Fire – Below Grade**

**DIVISION 3**



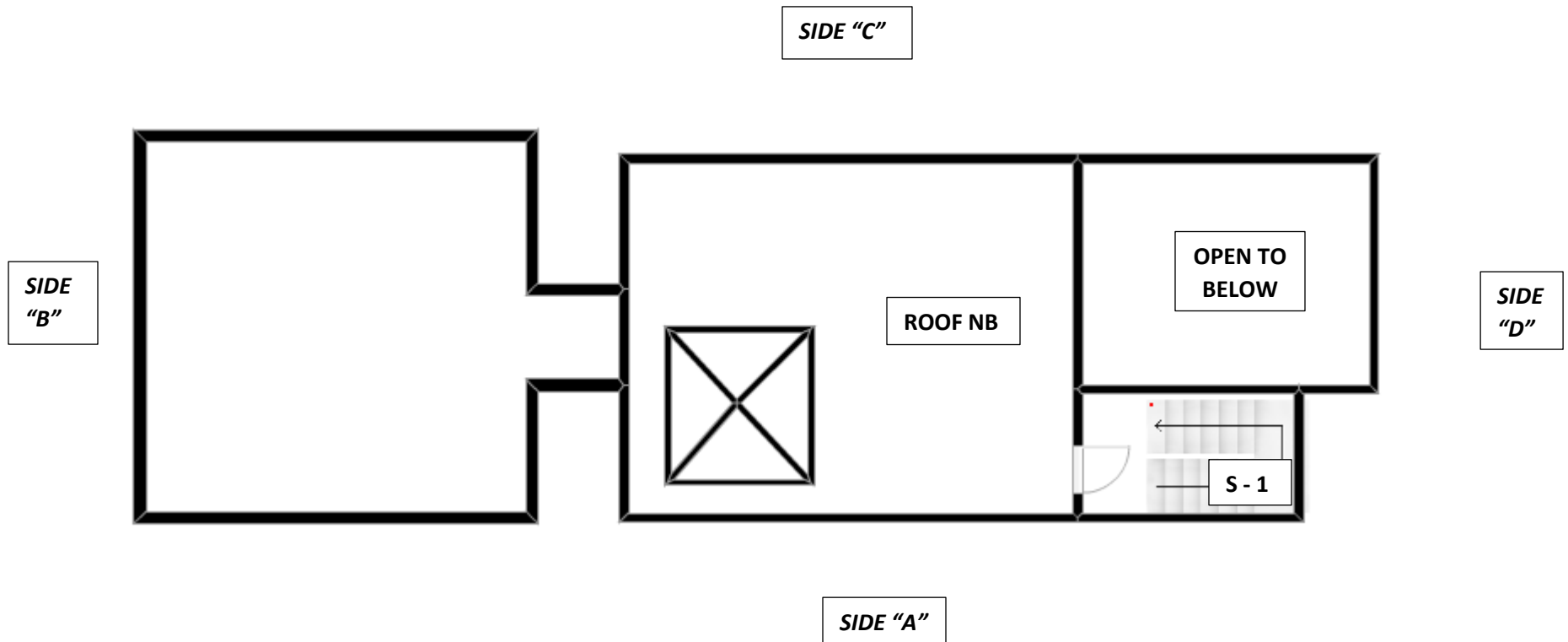
**NB after Room Number = No Burns Allowed In That Space**

**No Burns in Stairwells**

**Barnstable County Fire Rescue Training Academy  
Structural Fire Burn Scenarios – Local/Outside Fire Departments**

*SCENARIO # 3 - Two Room Fire – Below Grade*

**ROOF**



*NB after Room Number = No Burns Allowed In That Space*

*No Burns in Stairwells*

**Barnstable County Fire Rescue Training Academy  
Structural Fire Burn Scenarios – Local/Outside Fire Departments**

## Symbols



Fire Location



Fire Department Connection



Artificial Smoke Generated into Space