

**Barnstable County Fire Rescue Training Academy
Structural Fire Burn Scenarios – Local/Outside Fire Departments**

SCENARIO # 4 - One Room Fire – 1st Floor

SCENARIO # 4	FIRE LOCATION	FUEL LOAD	FUEL TYPE	TEACHING OBJECTIVES Train Students to:	NOTES
<i>One Room Fire – 1st Floor</i>	DIVISION ONE Room 101 OR DIVISION ONE Room 102	Three quarters (3/4)- 1 bale	Straw/Hay (untreated)	<ul style="list-style-type: none"> • properly extinguish a fire using the combination attack for fires at all grades • make proper handline selection • utilize proper hose handling techniques in the building • utilize and understand the need for proper communication between team members and the Incident Commander • understand and perform the responsibilities for each of the positions on the attack lines (nozzle, vent, and overhaul) • perform hydraulic ventilation as needed for each evolution • understand limiting fire spread 	Simulate One Room fire at grade

Barnstable County Fire Rescue Training Academy
Structural Fire Burn Scenarios – Local/Outside Fire Departments

SCENARIO # 4 - One Room Fire – 1st Floor

Instructor Notes:

- Focus on hose handling skills
- Proper line advancement
- All firefighters on same side of line
- Check doors for heat (as applicable)
- Controlling doors
- Attacking the fire properly
- Proper vent & overhaul
- Communications between firefighters attacking fire
- Communications with Incident Commander on progress and conditions

Fire Location (2 Options):

- **OPTION # 1- Room 101**
 - Attack line **enters through exterior door** to Stairwell S-1 to Hallway 104 NB – attack on fire can be made using either Hallway 103 NB OR Hallway 105 NB to access Room 101
- **OPTION # 2 - Room 102**
 - Attack line **enters through exterior door** to Stairwell S-1 to Hallway 104 NB – attack on fire can be made using door into Room 102 OR exterior attack from Exterior Door (Side “C”) in to Room 102
- **Fire locations – Option # 1 - Room 101 OR Option # 2 - Room 102**

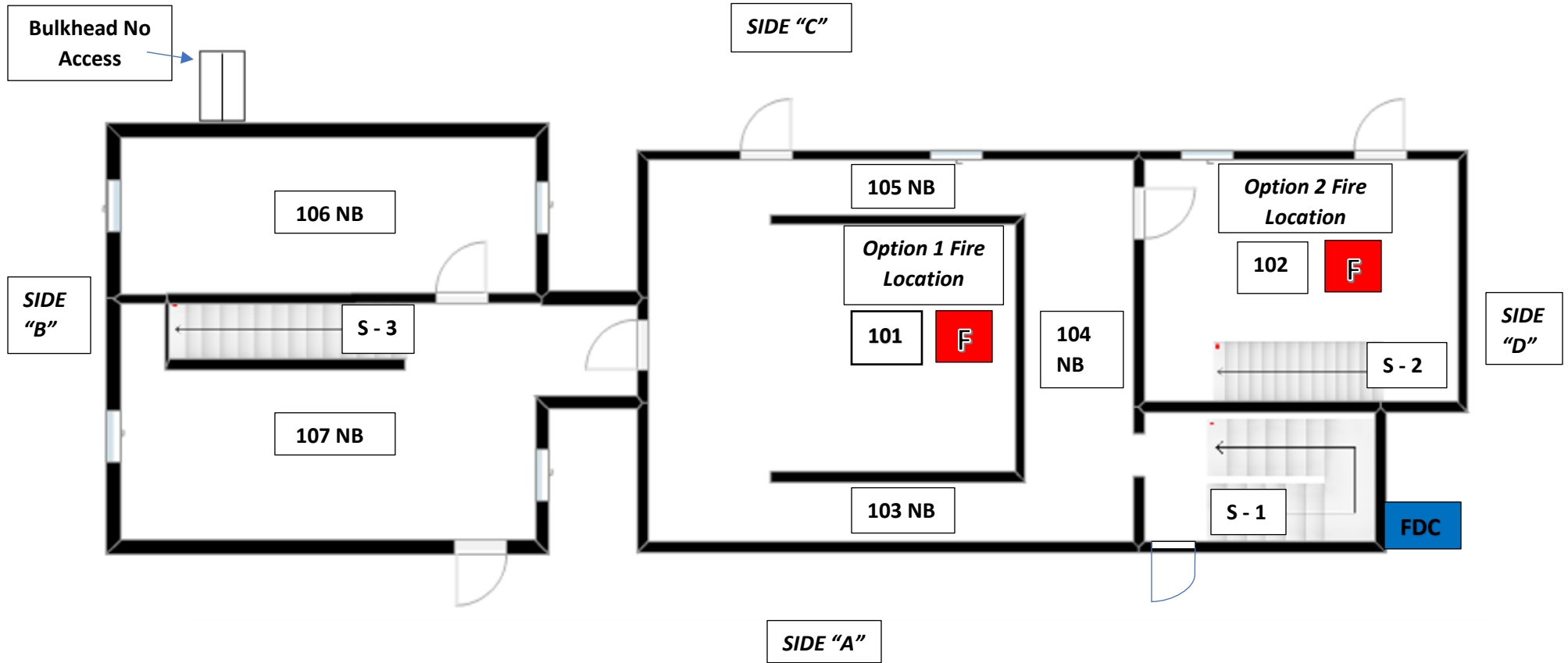
Emergency Exit/Entrance:

- Three emergency exits/entrances to fire locations – (1) **Exterior Door from Room 105 NB (Side C)**, (2) **Exterior door from Room 102 (Side C) OR (3) through Hallway 104 NB to Stairwell S-1 and out Exterior Door S-1**

Barnstable County Fire Rescue Training Academy
Structural Fire Burn Scenarios – Local/Outside Fire Departments

SCENARIO # 4 - One Room Fire – 1st Floor

DIVISION 1



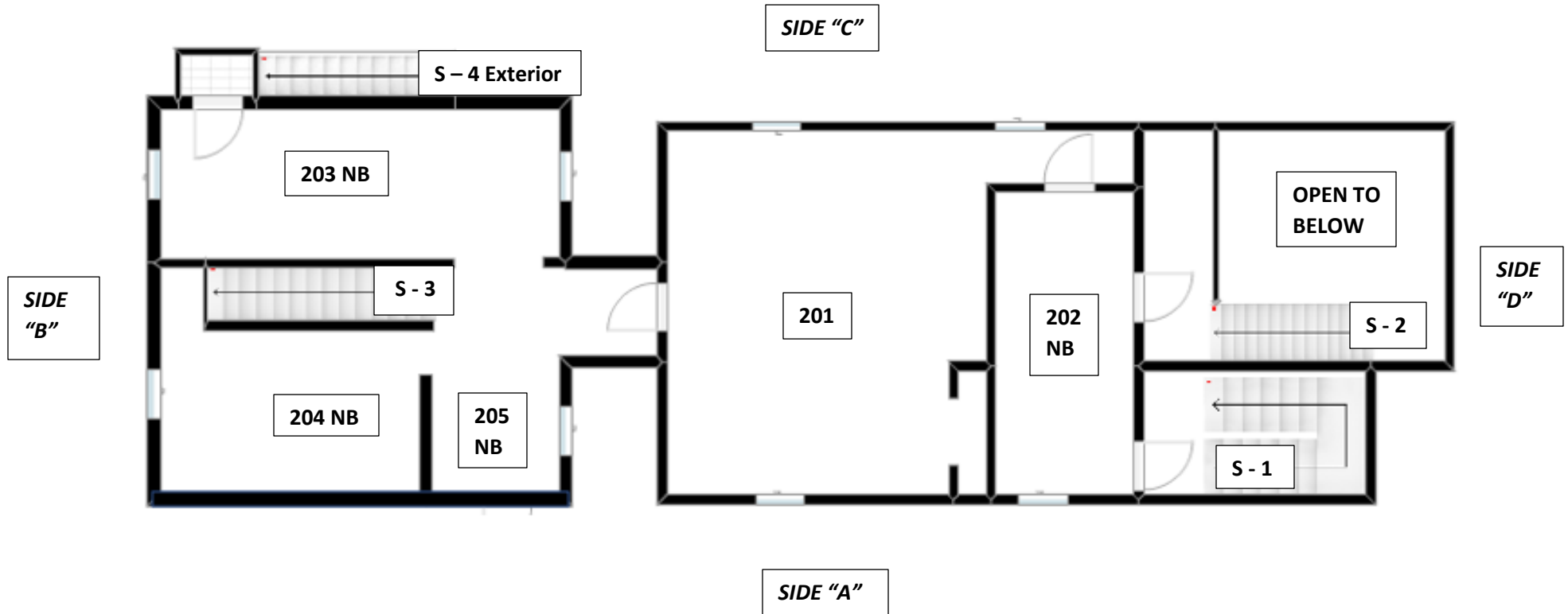
NB after Room Number = No Burns Allowed In That Space

No Burns in Stairwells

Barnstable County Fire Rescue Training Academy
Structural Fire Burn Scenarios – Local/Outside Fire Departments

SCENARIO # 4 - One Room Fire – 1st Floor

DIVISION 2



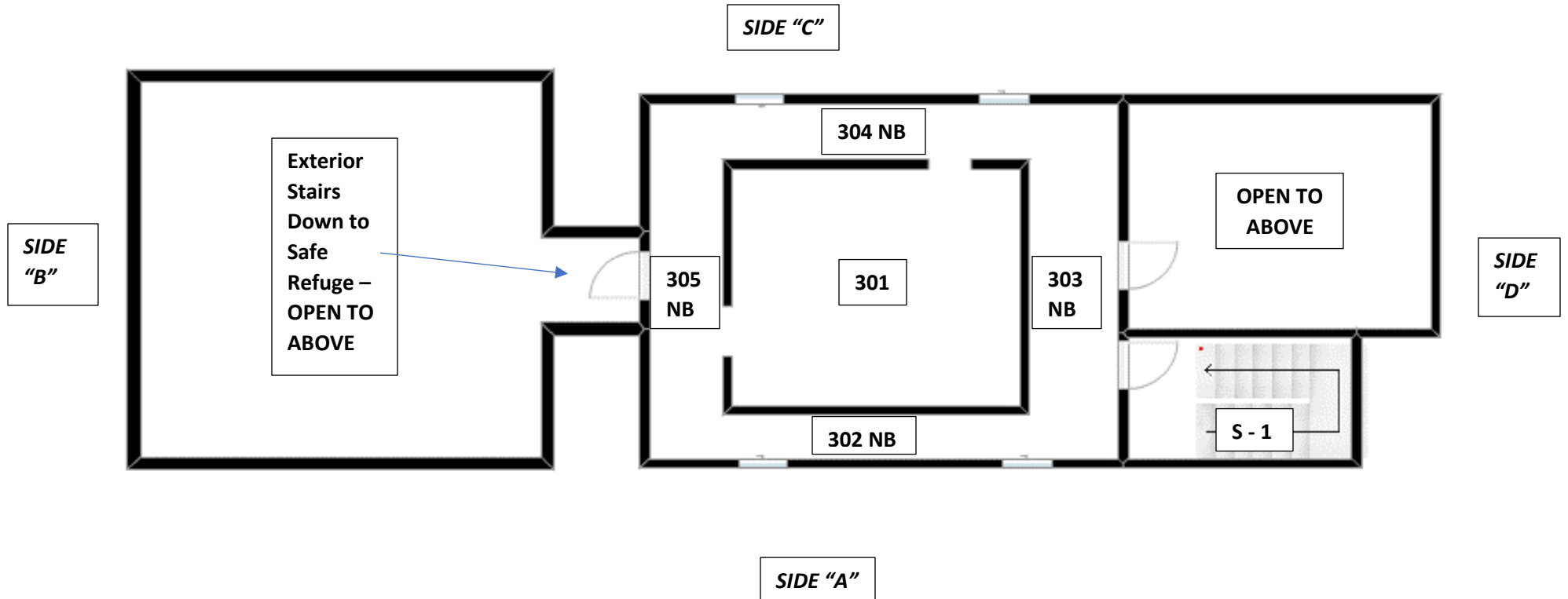
NB after Room Number = No Burns Allowed In That Space

No Burns in Stairwells

**Barnstable County Fire Rescue Training Academy
Structural Fire Burn Scenarios – Local/Outside Fire Departments**

SCENARIO # 4 - One Room Fire – 1st Floor

DIVISION 3



NB after Room Number = No Burns Allowed In That Space

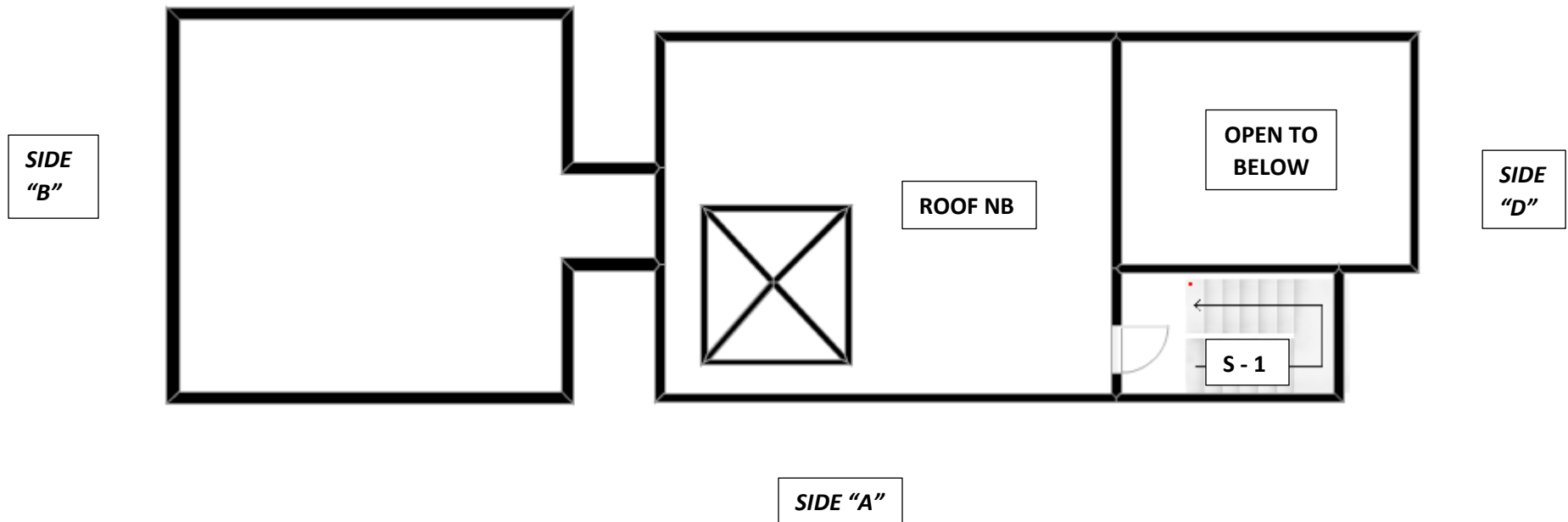
No Burns in Stairwells

Barnstable County Fire Rescue Training Academy
Structural Fire Burn Scenarios – Local/Outside Fire Departments

SCENARIO # 4 - One Room Fire – 1st Floor

ROOF

SIDE "C"



NB after Room Number = No Burns Allowed In That Space

No Burns in Stairwells

Barnstable County Fire Rescue Training Academy
Structural Fire Burn Scenarios – Local/Outside Fire Departments

Symbols



Fire Location



Fire Department Connection



Artificial Smoke Generated into Space