

**Barnstable County Fire Rescue Training Academy**  
**Structural Fire Burn Scenarios – Local/Outside Fire Departments**

***SCENARIO # 5 - Two Room Fire – 1<sup>st</sup> Floor***

SCENARIO # 5	FIRE LOCATION	FUEL LOAD	FUEL TYPE	TEACHING OBJECTIVES Train Students to:	NOTES
<b><i>Two Room Fire – 1<sup>st</sup> Floor</i></b>	<b>DIVISION ONE Rooms 101 &amp; 102</b>	Three quarters (3/4)- One (1) bale <u>per fire location</u>	Straw/Hay (untreated)	<ul style="list-style-type: none"> <li>• properly extinguish a fire using the combination attack for fires at all grades</li> <li>• make proper handline selection</li> <li>• utilize proper hose handling techniques in <u>and through</u> the building to the fire location</li> <li>• utilize and understand the need for proper communication between team members and the Incident Commander</li> <li>• understand and perform the responsibilities for each of the positions on the attack lines (nozzle, vent, and overhaul)</li> <li>• perform hydraulic ventilation as needed for each evolution</li> </ul>	Simulate one room fire at grade extending to second room at same level  OR  multiple room fire on same level

# Barnstable County Fire Rescue Training Academy

## Structural Fire Burn Scenarios – Local/Outside Fire Departments

### *SCENARIO # 5 - Two Room Fire – 1<sup>st</sup> Floor*

#### Instructor Notes:

- Focus on hose handling skills
- Proper line advancement
- All firefighters on same side of line
- Check doors for heat (as applicable)
- Controlling doors
- Attacking the fire properly
- Proper vent & overhaul
- Multiple fires – control and complete extinguishment of each fire to progress to next fire
- Communications between firefighters attacking fire
- Communications with Incident Commander on progress and conditions

#### Fire Locations:

- Attack line **enters through Exterior Door (Side “C”)** to Room 102 and attacks fire in Room 102; after extinguishment, **continues through interior door 102 into Hallway 104 NB**
- Attack line **continues through Hallway 104 NB** – attack on fire can be made using either Hallway 103 NB **OR** Hallway 105 NB to access Room 101
- **Fire locations – Room 102 and Room 101**

#### Emergency Exit/Entrance:

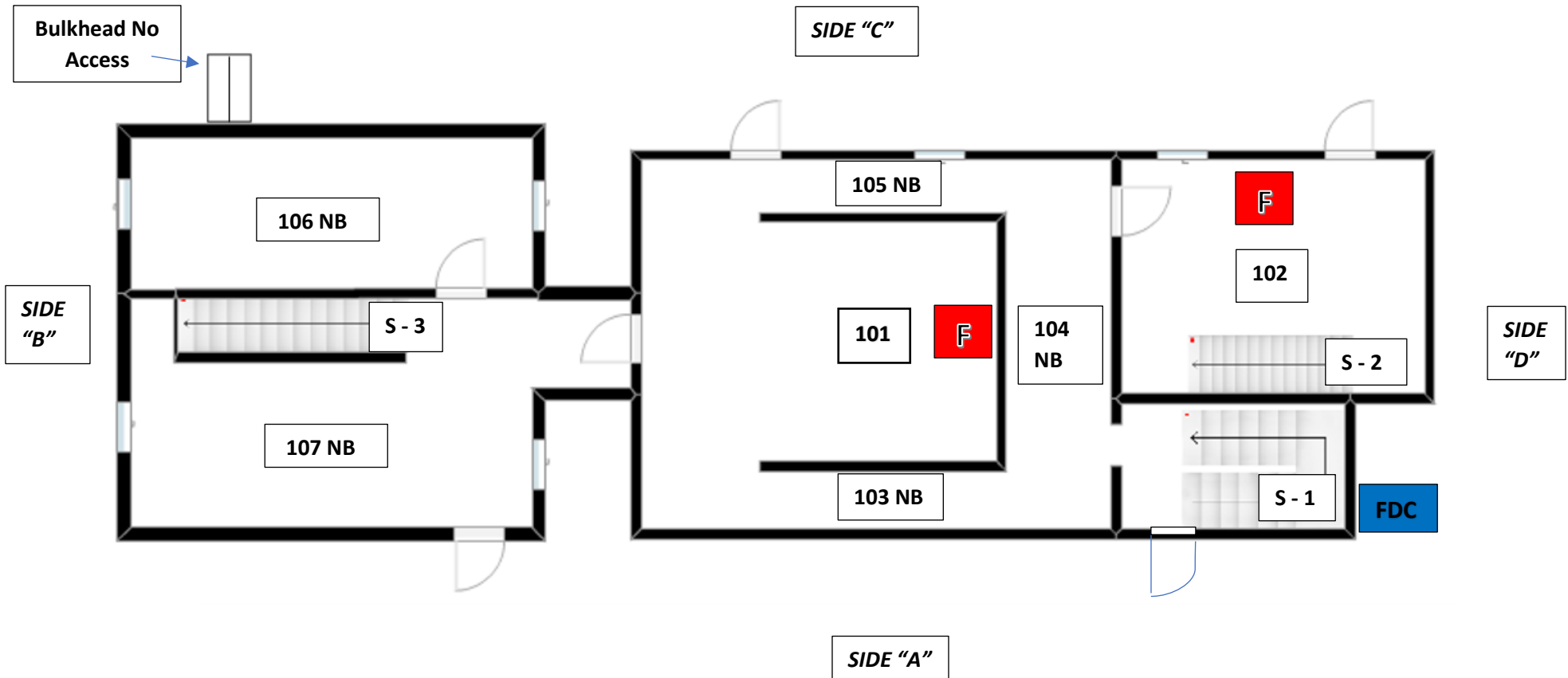
- Three emergency exits/entrances to fire locations – (1) **Exterior Door from Room 105 NB (Side C)**, (2) **Exterior door from Room 102 (Side C)** **OR** (3) **through Hallway 104 NB to Stairwell S-1 and out Exterior Door S-1**

# Barnstable County Fire Rescue Training Academy

## Structural Fire Burn Scenarios – Local/Outside Fire Departments

### SCENARIO # 5 - Two Room Fire – 1<sup>st</sup> Floor

#### DIVISION 1

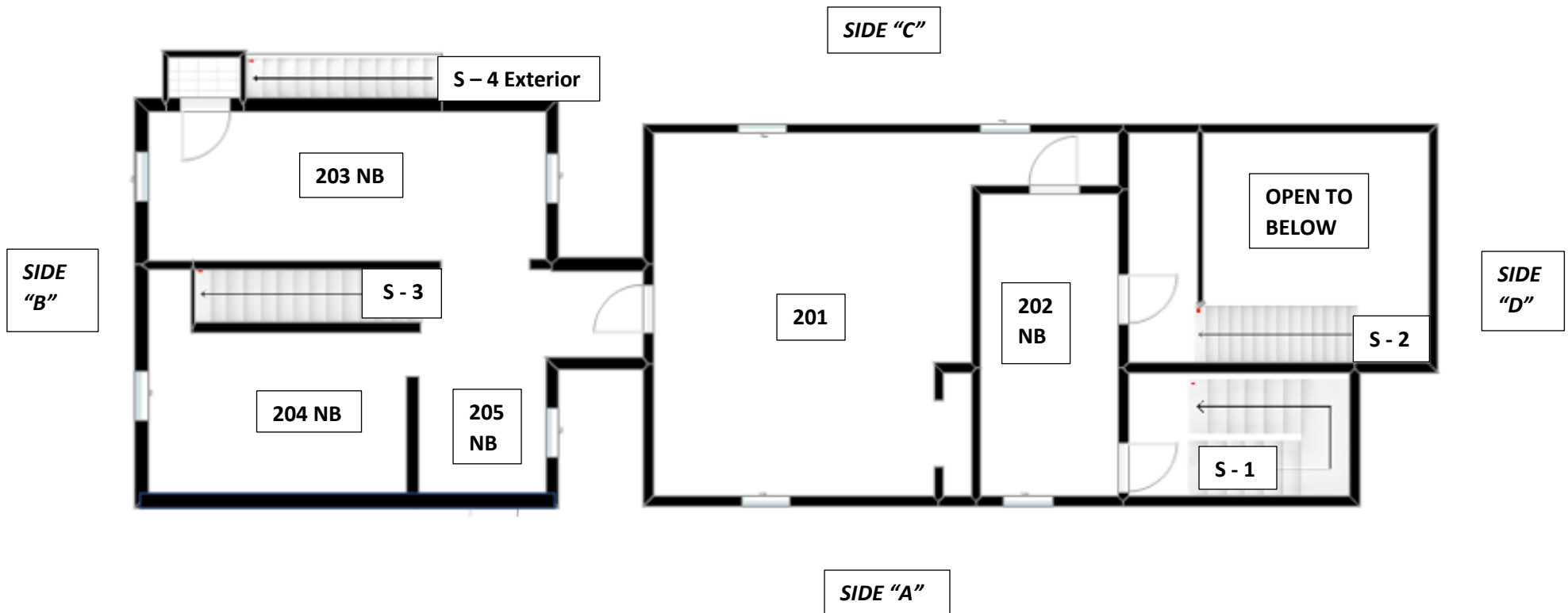


*NB after Room Number = No Burns Allowed In That Space*

*No Burns in Stairwells*

**Barnstable County Fire Rescue Training Academy**  
**Structural Fire Burn Scenarios – Local/Outside Fire Departments**

**SCENARIO # 5 - Two Room Fire – 1<sup>st</sup> Floor**  
**DIVISION 2**



*NB after Room Number = No Burns Allowed In That Space*

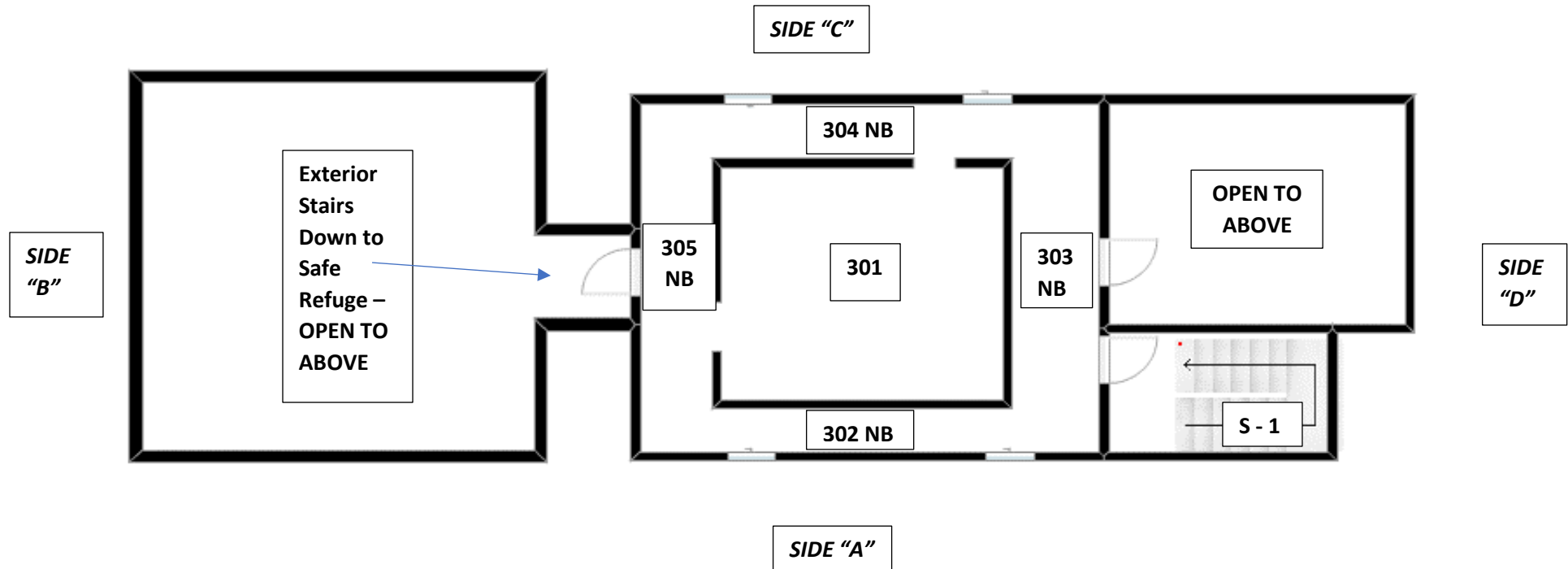
*No Burns in Stairwells*

# Barnstable County Fire Rescue Training Academy

## Structural Fire Burn Scenarios – Local/Outside Fire Departments

### SCENARIO # 5 - Two Room Fire – 1<sup>st</sup> Floor

#### DIVISION 3



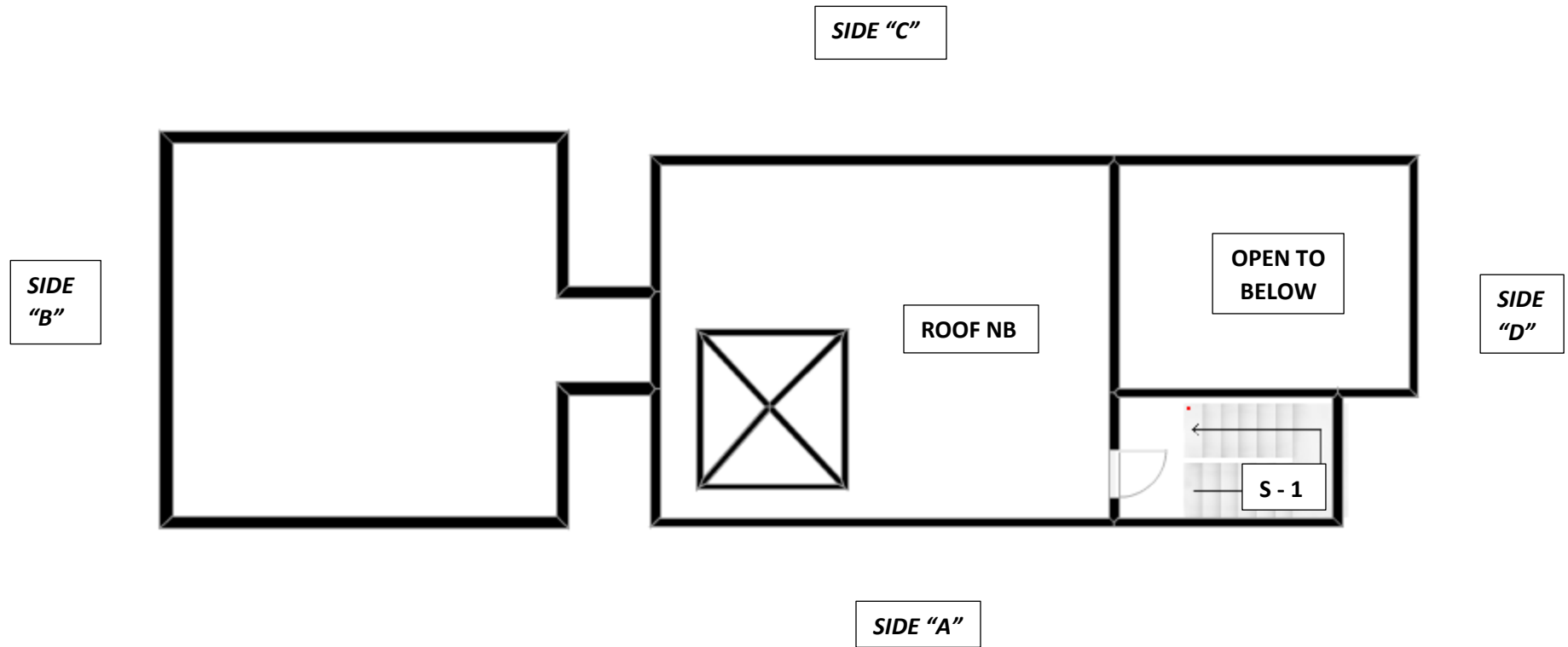
*NB after Room Number = No Burns Allowed In That Space*

*No Burns in Stairwells*

**Barnstable County Fire Rescue Training Academy**  
**Structural Fire Burn Scenarios – Local/Outside Fire Departments**

*SCENARIO # 5 - Two Room Fire – 1<sup>st</sup> Floor*

**ROOF**



*NB after Room Number = No Burns Allowed In That Space*

*No Burns in Stairwells*

**Barnstable County Fire Rescue Training Academy**  
**Structural Fire Burn Scenarios – Local/Outside Fire Departments**

## Symbols



Fire Location



Fire Department Connection



Artificial Smoke Generated into Space