

**Barnstable County Fire Rescue Training Academy
Structural Fire Burn Scenarios – Local/Outside Fire Departments**

SCENARIO # 6 - One Room Fire 1st Floor with Extension to 2nd Floor

SCENARIO # 6	LOCATION	FUEL LOAD	FUEL TYPE	TEACHING OBJECTIVES Train Students to:	NOTES
One Room Fire 1st Floor with Extension to 2nd Floor	DIVISION ONE – Room 102 & DIVISION TWO – Room 201	Three quarters (3/4)- One (1) bale <u>per fire location</u>	Straw/Hay (untreated)	<ul style="list-style-type: none"> • properly extinguish a fire using the combination attack for fires at all grades • make proper handline selection • utilize proper hose handling techniques in <u>and through</u> the building <u>with advancement to upper floors</u> • utilize proper communication between team members and the Incident Commander • understand and perform the students on the responsibilities for each of the positions on the attack lines (nozzle, vent, and overhaul) • perform hydraulic ventilation as needed for each evolution • understand limiting fire spread • understand the importance of flow path and door control 	<p>Simulate One Room Fire at grade with extension to second floor</p> <p>To increase visibility challenges and create realistic scenario use smoke generator to smoke stairwells and hallways as appropriate</p> <p>Use of multiple attack lines on two levels simultaneously</p> <p>Stairwells will be smoke filled (artificial smoke generation) with <u>NO Fire in Stairwells</u></p>

Barnstable County Fire Rescue Training Academy

Structural Fire Burn Scenarios – Local/Outside Fire Departments

SCENARIO # 6 - One Room Fire 1st Floor with Extension to 2nd Floor

Instructor Notes:

- Focus on hose handling skills
- Proper line advancement over multiple floors
- Spreading out on line
- All firefighters on same side of line
- Check doors for heat (as applicable)
- Controlling doors
- Attacking the fire properly
- Proper vent & overhaul
- Recognition of fire on multiple floors
- Consider use of multiple lines simultaneously
- Communications between firefighters attacking fire
- Communications with Incident Commander on progress and conditions

Fire Location (2 Options on second fire):

- Attack line (Line # 1) **enters through exterior door** to Stairwell S-1 to Hallway 104 NB – advance on fire can be made using either Hallway 103 NB **OR** Hallway 105 NB to fire location in Room 101
- After extinguishment of fire on first floor, attack line **withdraws from location** and **enters Stairwell S-1 through Door 202 NB to Room 202 NB through door 201** to attack the fire in Room 201 **OR** Second attack line (Line # 2) **enters through exterior door** to Stairwell S-1, **enters Stairwell S-1 up** to second floor **through Room 202 NB through door 201 to attack the fire in Room 201**. **Line #1** then **advances to** second floor using Stairwell S-1 as backup line until extinguishment is completed.
- **Fire locations – Room 101 and Room 201**

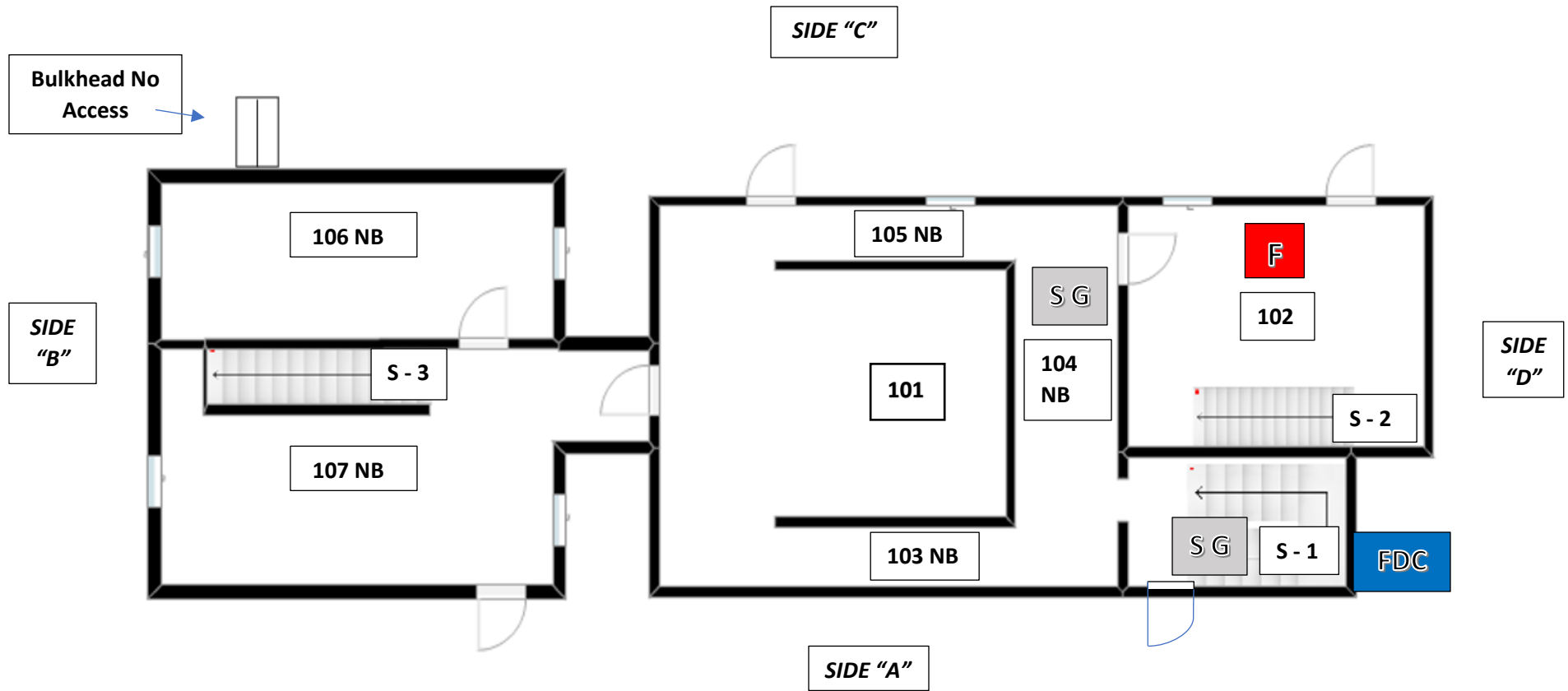
Emergency Exit/Entrance:

- Two (2) emergency exits/entrances to fire location: Division One (1) – **Exterior Door from Room 105 NB (Side C), exit back through Hallway 104 NB to Stairwell S-1 and out Exterior Door S-1**
- Two (2) emergency exits/entrances to fire location: Division Two (1) – **Exit from Room 201 through Room 203 NB to Exterior stairwell S-4, OR (2) exit back through Room 202 NB to Stairwell S-1 downstairs and out Exterior Door S-1**

**Barnstable County Fire Rescue Training Academy
Structural Fire Burn Scenarios – Local/Outside Fire Departments**

SCENARIO # 6 - One Room Fire 1st Floor with Extension to 2nd Floor

DIVISION 1



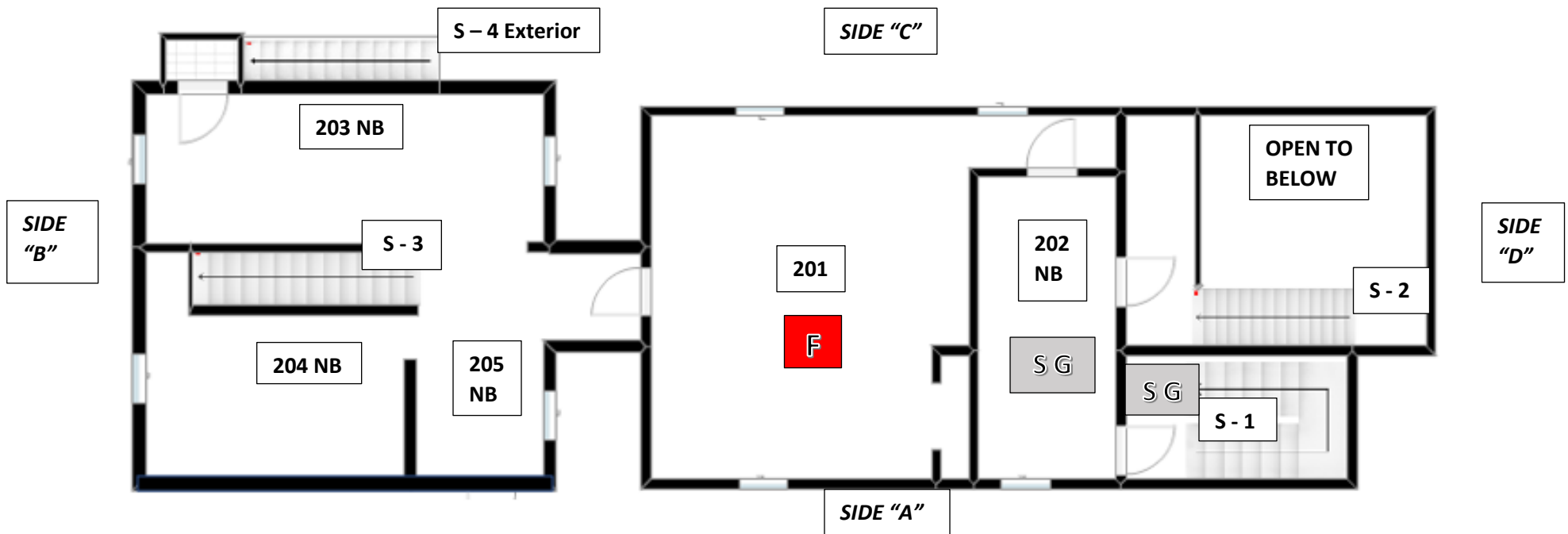
NB after Room Number = No Burns Allowed In That Space

No Burns in Stairwells

**Barnstable County Fire Rescue Training Academy
Structural Fire Burn Scenarios – Local/Outside Fire Departments**

SCENARIO # 6 - One Room Fire 1st Floor with Extension to 2nd Floor

DIVISION 2



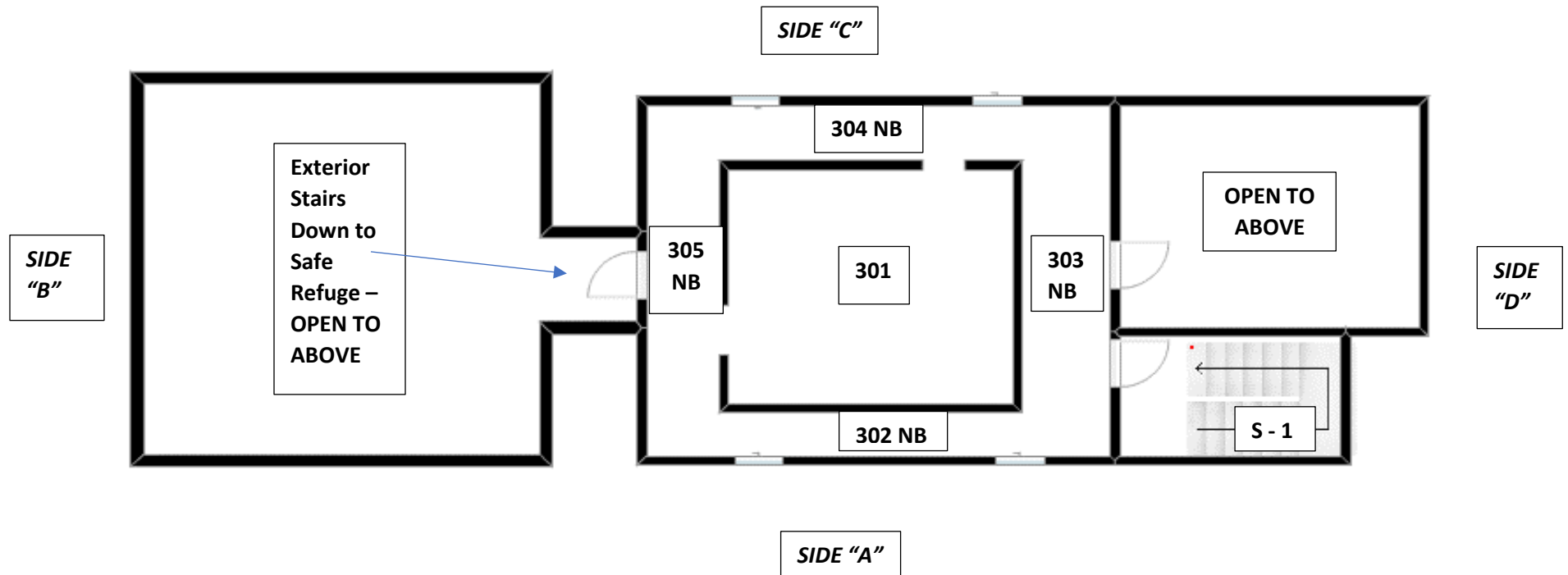
NB after Room Number = No Burns Allowed In That Space

No Burns in Stairwells

**Barnstable County Fire Rescue Training Academy
Structural Fire Burn Scenarios – Local/Outside Fire Departments**

SCENARIO # 6 - One Room Fire 1st Floor with Extension to 2nd Floor

DIVISION 3



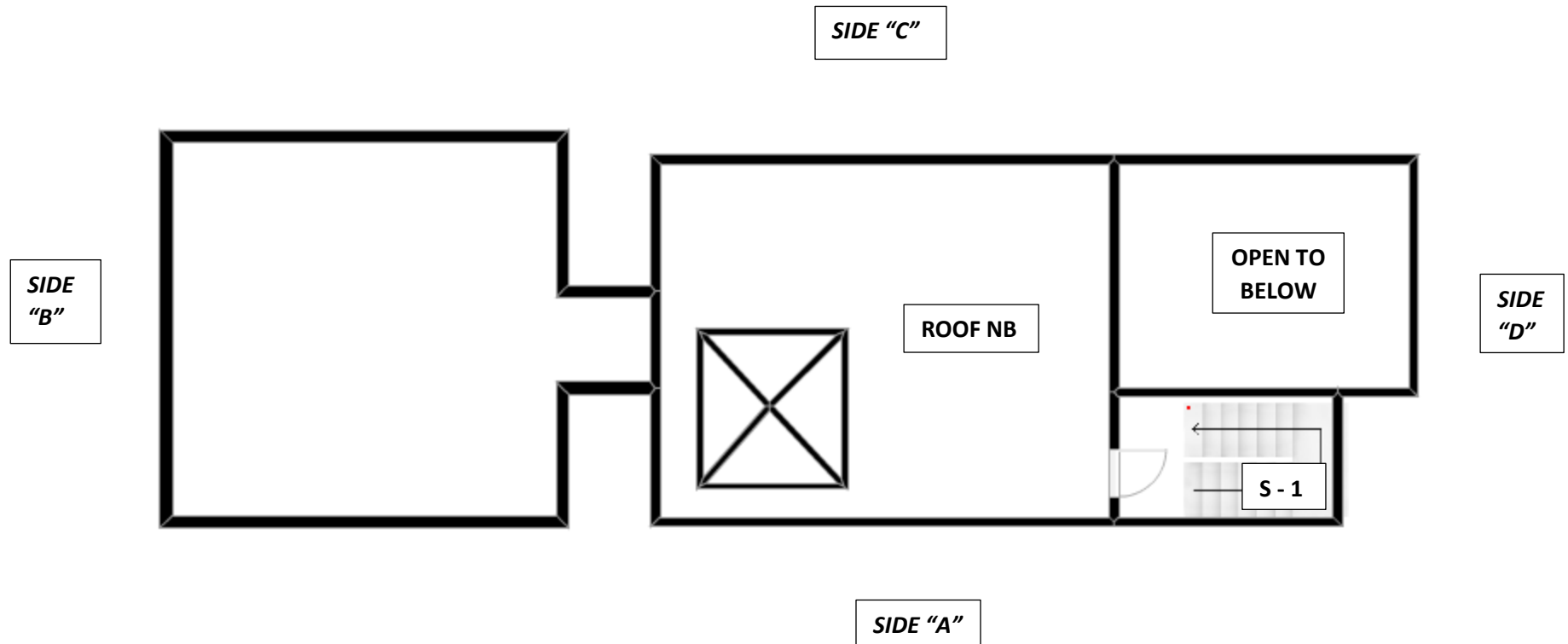
NB after Room Number = No Burns Allowed In That Space

No Burns in Stairwells

Barnstable County Fire Rescue Training Academy
Structural Fire Burn Scenarios – Local/Outside Fire Departments

SCENARIO # 6 - One Room Fire 1st Floor with Extension to 2nd Floor

ROOF



NB after Room Number = No Burns Allowed In That Space

No Burns in Stairwells

**Barnstable County Fire Rescue Training Academy
Structural Fire Burn Scenarios – Local/Outside Fire Departments**

Symbols



Fire Location



Fire Department Connection



Artificial Smoke Generated into Space